



Ms. Danielle Buchheit
126 Eagle Crest Road
Port Jervis, NY 12771

Side Saddle at the USET
USET Headquarters, Gladstone, NJ
Celebrating Our 16th Year



July 14-15, 2018

9 AM Each Day

Saturday

All Seats Aside

\$500 Open Pleasure Stake Class

\$250 Historic Side Saddle Habit Division

Friends Reception

Sunday

USHJA/USEF "C" Rated

\$1000 Ladies Side Saddle Hunter Division

USHJA ZONE 2 Ladies Side Saddle Finals

PLEASE COMPLETE USET HEALTH PROTOCOL

Dear Friends,

Welcome to the 2018 Side Saddle at the USET, our 16th year at this historic venue. Thank you for your years of support as exhibitors, sponsors, volunteers and friends.

Four Perpetual Trophies are awarded, with the generous support of our "Friends of Side Saddle," in several divisions. The "Summer Kiss Perpetual Trophy" in memory of Mary Weeks is sponsored by the NEA in the Historic Side Saddle Habit Division. Similarly, "The Clear Screen Perpetual Trophy" in memory of Jane Bockenik, is sponsored by Arlene McHale for the Schooling Hunter Division. Kit Roszko graciously donated "The Ester Everhart Trophy" for the Junior Equitation Champion. Donna Estey-Vild has sponsored a trophy in memory of her mare "Country Christmas," which is awarded to the Champion in the Pleasure Horse Division.

This year, Class 22 in the Open Equitation Division (open to both SSA members and non-members) will be an SSA qualifying class. SSA Members will have their SSA cards signed and will get a head start on points toward the 2019 National Horse Show in the UK. The "Age of Elegance Award" donated by Roger Philpot on behalf of the SSA will be presented to the most elegant participant in the Open Equitation Division.

Saturday's show will feature the \$500 Pleasure Horse Stakes, once again sponsored by Mary Beth Walker. There will also be \$250 awarded in the Historic Side Saddle Habit Division, sponsored by Shelly Liggett. New this year, show off your "Inner Bling," in the Queens' Class. Those gorgeous habits that are hidden in your closet need to see the daylight. Time to show them off and then lets see how well you can savor your champagne (ginger ale for juniors, watch those juniors!) in the "Champagne Challenge." The "Champagne Challenge" is a performance class, where you have to prevent that precious liquid from escaping from an open vessel., wearing any kind of habit or costume. The most Champagne preserved, WINS!! Following Saturday's show, all aside enthusiasts will come together in the USET Rotunda for the "Friends Reception." Show off your historic habit at the same time. Wine and cheese, some fun shopping, our great silent auction and good friends reunite to make it a special evening.

The show resumes on Sunday morning with the USEF/USHJA recognized Ladies Side Saddle Hunter Division, where we will be offering \$1000.00 in prize money. Mary Beth Walker proves she is the "best friend" of side saddle, as she is our lead sponsor of this division. The show has been awarded the USHJA Zone 2 Finals and competitors from Zone 2 will be awarded bonus points toward the Zone 2 year-end awards.

PLEASE follow the USET Health protocol that can be found on their website.

This weekend only takes place because of your support and the devotion of the exhibitors, volunteers, sponsors and the Liberty Board of Directors that puts it together. THANK YOU ALL. On behalf of the Ladies of the Liberty Side Saddle Network, (Dede Parisi, Fran Johanns, Shelly Liggett, Carolyn Penna, Jen Stevenson, Arlene McHale, Susan Data-Santak, Mary Beth Walker, Jacqui Richie and me), we look forward to seeing you in July.

Danielle Buchheit

USEF Competition Name: Side Saddle at the USET
Competition Division(s) and Rating(s):

USEF#: 321596

"C" Side Saddle Only



WAYS TO SAVE AS A US EQUESTRIAN MEMBER

DOVER
SADDLERY

Save 10% online and in stores

Protect yourself with discounted
liability and AD&D insurance



equoTM
equine transport redefined

Save 15% off your first ride and
5% off all other rides

Buy 10 bags of feed and get one free!

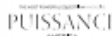
**TRIPLE
CROWN.**



JOHN DEERE

Save up to 28% on equipment like
GatorsTM and lawnmowers

PLUS MANY MORE!



**Directions to the USET Foundation Headquarters
1040 Pottersville Rd. Gladstone, NJ 07934-9955**

FROM THE NORTHEAST: NY Thruway take Route I-287 South, or take George Washington Bridge to Route I-80 West to Route I-287 South. From Route I-287 South take Exit 22 to Route 202/206 North (look for brown USET signs). Proceed North on Route 206 to Pottersville Road aka Route 512 (sixth traffic light-approximately 5 miles). Turn left at the traffic light. Follow GENERAL DIRECTIONS BELOW.

FROM THE NORTHWEST: Route I-80 East take Exit 27 off Route I-80 to Route 206 South. Take 206 South. Approximately 4 miles south of Chester make a right at the light for Pottersville Road, aka Route 512. Follow GENERAL DIRECTIONS below.

FROM THE SOUTH: NJ Turnpike take Exit 10 off NJ Turnpike to Route I-287 North. Take Exit 22B off Route I-287 for Route 202/206 North (look for brown USET signs). Proceed North on Route 206 to Pottersville Road aka Route 512 (sixth traffic light-approximately 5 miles). Turn left at the traffic light. Follow GENERAL DIRECTIONS BELOW.

FROM THE WEST: Route I-78 East to Route I-287 North. The second exit on I-287 will be #22B for Routes 202/206 North (look for brown USET signs). Proceed North on Route 206 to Pottersville Road aka Route 512 (sixth traffic light-approximately 5 miles). Turn left at the traffic light. Follow GENERAL DIRECTIONS BELOW.

GENERAL DIRECTIONS: Travel on Pottersville Road for approximately 3/4 of mile. On left is white USET sign, turn onto School House Road. Follow this road, after the third speed bump the USET headquarters are on the right. Enter the stable through the grand rotunda; the offices are on the right.

VISITORS SHOULD PRESS NUMBER 03 TO DIAL THE USET FOUNDATION AND SOMEONE WILL GIVE YOU ACCESS. AFTER BUSINESS HOURS PLEASE PRESS CONCIERGE BUTTON. DURING HORSE SHOWS, EVENTS – GATE WILL REMAIN OPEN FOR ACCESS.

PAWS AND REWIND

Pawsandrewind.com

661-977-6637

**Official Photographer of Side Saddle at the USET
Will be on location to photograph the Horse Show**

Horse Show Officials

Judge Saturday

Ms. Muffie Geissler Sergeantsville, NJ

Judge Sunday

Ms. Maria Takacs Oldwick, NJ

SSA Judge (Saturday)

Mr. Roger Philpot Kinenton Warwickshire, UK

Ms. Heidi Opdyke Moneta, VA

Historic Side Saddle Habit Division Judge

Ms. Gail DiScipio Thompson, CT

Show Secretary

Ms. Deidre Would Stockton, NJ

Show Manager

Ms. Jacqui Richie Aiken, SC
267-240-7389 jacquirichie@yahoo.com

USEF Steward (Sunday)

Ms. Kelly Munz Califon, NJ

Announcer

Ms. Ann Schneider Summit, NJ

Course Designer

Ms. Jacqui Richie Aiken, SC

Competition Management

Liberty Side Saddle Network

Ringmaster

Ms. Arlene McHale Dalton, PA

Photography

Paws and Rewind Flemington, NJ
Pawsandrewind.com 661-977-6637

Veterinarian On Call

Dr. Michael Fugaro Long Valley, NJ

862-258-0898

EMT

Ms. Kathy Aroyo

Sunday, July 15, 2018
USEF “C” Rated Show
Use USEF entry form
USHJA Zone 2 Finals

\$1000 Ladies Side Saddle Hunter Division.

Sponsored by Mary Beth Walker, Cornwall, NY

To be ridden by ladies who are no longer eligible to compete as a junior exhibitors. Stallions and ponies are not permitted. Entry \$75 per class.

Class 100 – \$250 Ladies Hunter Side Saddle Under Saddle – To be shown at a walk, trot and canter both ways of the ring in formal hunting attire with appointments. To be judged on performance and soundness with emphasis on manners 75%; formal hunting attire, appointments and general overall appearance of horse and rider 25%. Judges should give particular consideration to quality and condition of tack. 1st Trophy, Ribbons 1-8.

Class 101 - \$250 Ladies Hunter Side Saddle Under Saddle – To be shown at a walk, trot and canter both ways of the ring in formal hunting attire with appointments. To be judged on performance and soundness with emphasis on manners 75%; formal hunting attire, appointments and general overall appearance of horse and rider 25%. Judges should give particular consideration to quality and condition of tack. 1st Trophy, Ribbons 1-8.

Class 102 - \$250 Ladies Hunter Side Saddle Hunter Hack - To be shown at a walk, trot and canter both ways of the ring. Judges may ask for a hand gallop, but no more than eight to hand gallop at one time. To jump two fences at 2'6". To be judged on performance and soundness with emphasis on manners. Under Saddle performance to count 50%. Over Fences performance to count 50%. 1st Trophy, Ribbons 1-8.

Class 103 - \$250 Ladies Hunter Side Saddle Over Fences – To be judged over a course of at least 8 fences, 3' in height. 1st Trophy, Ribbons 1-8.

Prize money will be awarded through the office in classes 100 through 103
First \$80; 2nd \$60; 3rd \$45; 4th \$30; 5th \$20; 6th \$15

Class 104 - Ladies Hunter Side Saddle Champion and Reserve Champion – Awarded to the two horses, which have earned the most points in classes 101, 102 and 103. In case of a tie the horses will hack off to determine the Champion. Participants in Class 100 will have their points count toward end of year awards, but not towards this Championship. Bonus Points awarded Zone 2 Exhibitors.

Every class offered herein which is covered by the rules and specification of the current federation rulebook will be conducted and judged in accordance therewith.

New Jersey's ONLY

Camp Leaping Horn

Annual Side Saddle Camp



Apply Online!
www.CampLeapingHorn.com

July 10 - 13, 2018

Join us at

USET Headquarters

1040 Pottersville Rd,

Gladstone, New Jersey 07934



~ Saturday Following the Horse Show ~
The Friends' Reception

Sponsored by NEA

*Model that historic equestrian fashion during the
"Friends Reception."*

Exhibitors, Vendors, Sponsors & Volunteers

All are invited to our Friends' Reception

The reception will be held in the USET Rotunda. Come and enjoy the refreshments, have a chance to meet new side saddle folks, enjoy viewing historic fashions and an opportunity to chat with old friends. The Side Saddle Scholarships will be awarded at this time. There will also be time to do some shopping! Our Silent Auction Items will be on display. Silent Auction Item Donations are Welcome.



For Further Information

Please Contact Danielle Buchheit

heartlight@optonline.net or 914-474-3666

SIDE SADDLE SCHOLARSHIPS

Two \$300.00 scholarships to be used within the next 12 months will be awarded (1 each) to a member of the International Side Saddle Organization and the NEA toward side saddle clinics and lessons.

Each organization will decide on the criteria for the scholarships and members of those organizations should consult with their organizations. Scholarship support comes through contributions to the "Silent Auction" and the NEA.

Item Donations for the "Silent Auction" are welcome.

Side Saddle Saturday ~ July 14, 2018

Please use "Side Saddle Saturday" Entry Form Only
ALL ASIDE SEATS Hunt Seat, Stock Seat, Saddle Seat.

Walk, Trot/Jog/Intermediate Gaits, Canter/Lope/Forward Gaits Acceptable.

Beginner Side Saddle. All Seats. Walk, Trot/Jog/Intermediate Gait. Horse & Rider Combination within first 2 years of riding aside.

1. Beginner Equitation. Above Gaits both ways of the ring.
2. Beginner Equitation. Above Gaits both ways of the ring, stand quietly.
3. Beginner Pleasure. Above Gaits both ways of the ring, may be asked for extended the gait.

Pleasure-All Seats. Walk, Trot/Jog/Intermediate Gait

4. Above Gaits both ways of the ring, and stand quietly.
5. Above Gaits both ways of the ring, stand quietly and back.
6. Above Gaits both ways of the ring. Extended Gait and back quietly.

Equitation-All Seats. Walk, Trot/Jog/Intermediate Gait

7. Above Gaits both ways of the ring, and stand quietly.
8. Above Gaits both ways of the ring, stand quietly and back.
9. Above Gaits both ways of the ring. Extended Gait and back quietly.

Schooling Hunter High 2'/Low 18." Sponsored by Arlene McHale State Farm

10. Under Saddle. Walk, Trot and Canter both ways of the ring.
11. Hunter Hack. Walk, Trot and Canter both ways of the ring and jump two fences High 2'/Low 18"
12. Over Fences. To jump a course of six to eight jumps. High 2'/ Low 18"

Open Pleasure -All Seats Walk, Trot/Jog/Intermediate, Canter/Lope/Forward Gaits Acceptable. Division Sponsored by Donna Este-Vild.

13. Pleasure. All Gaits both ways of the ring, stand quietly and back.
14. Bridle Path Hack. All Gaits both ways of the ring, extended gaits stand quietly and back.

15. **\$500 Open Pleasure Stake – Sponsored by Mary Beth Walker** All seats. All Gaits both ways of the ring, extended gaits, stand quietly and back. Must show in all pleasure classes in the division. **Entry Fee \$50.**

1st \$155; 2nd \$120; 3rd \$85; 4th \$55; 5th \$45, 6th \$40.

16. The Queens' Class. Habit Suitable for a Queen. All the "Bling." Walk Only.
17. "Champagne Challenge." Any Style Habit or Costume. Walk, Trot, Jog, Inter. Gait. Carry Glass of Champagne/Ginger Ale (juniors). Winner has the most left.

Lunch

18. **Leadline-** Open to riders not reaching their 8th birthday as of 12/31/17.
19. **Costume Class-** Fun and Fantasy. Walk Only.

Open English Equitation Division- Walk, Trot, Canter. May be asked for the rising trot, extended trot, hand gallop or lateral movements in any class in this division.

20. **Open Equitation.** Walk, Trot and Canter both ways of the ring.
21. **Prix Caprelli.** Walk, Trot and Canter both ways of the ring. Individual test to include 2 fences not to exceed 2'.

22. **SSA Open Equitation.** Walk, trot and canter, both ways of the ring. Individual test, not to exceed 2 minutes demonstrating all 3 gaits on both reins will be specified in the ring. Turn out 15%. Additional set of ribbons for SSA members.

AGE OF ELEGANCE TURNOUT AWARD.

Award recipient to be selected from the entrants in the Open Equitation Division. Judged independently on the elegance of the picture presented by horse and rider. Attention may be paid to the rider's personal appearance. The winner of this class is awarded the Age of Elegance Trophy. Sponsored by Roger Philpot.

Junior English Equitation Division. *A Junior is an individual who has not reached her 18th birthday as of December 1, 2017. Division Sponsored by Kit Roszko.*

23. Junior Equitation. Walk and Trot both ways of the ring.

24. Junior Equitation. Walk, Trot both ways of the ring.

25. Junior Equitation. Walk, Trot and Canter both ways of the ring, may be asked for extended trot and hand gallop.

\$250 Historic Side Saddle Habit Division. All Seats. Sponsored by Shelly Liggett.

26. \$100 Park Challenge. Walk, Trot/Jog/Intermediate Gait. Additional tests at the Judge and Management's discretion

First \$35; 2nd \$25; 3rd \$20; 4th \$10; 5th \$5; 6th \$5

27. \$50 Turnout. All competitors must provide a short type written description of their habit with their entry form of 150 words or less. First \$20; 2nd \$10; 3rd – 6th \$5.

28. \$100 Pleasure. Walk, Trot/Jog/Intermediate Gait both ways of the ring.

First \$35; 2nd \$25; 3rd \$20; 4th \$10; 5th \$5; 6th \$5

29. Grooms Class. To be shown at a Walk and Trot. Open to all that have not competed at this show. Must be ridden aside.

Additional Rules/Information for Saturday, July 14, 2018

- 1) Entry fee: **\$20.00** per class, except Class # 15, entry fee \$50.00. Entries will also be charged a \$20.00 office fee and \$5.00 EMT fee per rider.
- 2) Horse and Rider combinations in classes 1 through 9 are limited to those classes and class 16, 17, 19, 23, 24, 26, 27, 28.
- 3) **“All Seats” means the class is open to Hunt Seat, Stock Seat and Saddle Seat aside riders. Either the trot, jog or intermediate gait, canter/lope/extended gait is acceptable in these classes.**
- 4) Management reserves the right to cancel, combine or divide classes as entries warrant.
- 5) Show management shall decide all questions not covered by the rules in this prize list
- 6) **Prize Money:** All prize money will be paid through the show office. All prize monies in excess of balance due will be mailed to the owner of record, unless otherwise directed, within 30 days after the completion of the show.

RULES AND REGULATIONS

- 1) It is a condition of entry to the showground's that these rules and regulations and those of the USEF and USHJA are read, understood and accepted.
- 2) Entry fee for Sunday, July 15, 2018 is \$75.00 per class.
- 3) Entrants will be charged a \$20.00 office fee and \$5.00 EMT fee per rider.
- 4) Refunds on entries will be made only on receipt of a Veterinarian's certificate. An office-processing fee of \$20.00 will be deducted from all refunded entries.
- 5) Limited stabling is available. All stall fees **MUST** be paid in advance and are non-refundable. Stalls are 12' by 12'. Stalls are \$70.00 for the first night and \$35.00 each additional night. Please make stabling arrangements through Danielle Buchheit 914-474-

- 3666 or heartlight@optonline.net A \$25 stall cleaning fee will be assessed to all entries stabling at the facility. It is refundable provided that the stall is broom swept prior to departure. If showing on both Saturday and Sunday, only one fee will be assessed per stall.
- 6) Eight ribbons will be awarded in each class. Champion and Reserve Champion ribbons will be awarded in each division.
- 7) A copy of a negative Coggins test, dated within one year of the show, **MUST** be submitted with entry. **PLEASE FOLLOW THE USET & NJS HEALTH PROTOCOL. Visit www.uset.org. It will be verified before you unload your horse.**
- 8) Protective headgear is compulsory for riders in all classes, when mounted anywhere on the competition grounds. Properly fastened protective headgear, which meets or exceeds ASTM (American Society for Testing and Materials)/SEI (Safety Equipment Institute) standards for equestrian use and carries the SEI tag. **ALL CLASSES, INCLUDING ALL COSTUMED AND TURNOUT CLASSES**
- 9) Dogs must be leashed at all times.
- 10) Show management shall decide all questions not covered by the rules in this prize list.
- 11) **The USET, Liberty Side Saddle Network, its owners, officers, operators, employees, volunteers or show management will not be responsible for any accident, injury, loss or mishap which might occur at this show to any person, animal or property of exhibitors or spectators. This applies to all days from July 13-15, 2018.**
- 12) Ring Size: Approximately 125'x 260'. Footing- Sand based.
- 13) Food available on show grounds.
- 14) **ALL CLASSES MUST HAVE A MOUNTED HUMAN RIDING ASIDE**
- MOTORIZED VEHICLE STATEMENT-** Minors who do not have a valid driver's license which allows them to operate a motorized vehicle in the state in which they reside will not be permitted to operate a motorized vehicle of any kind including, but not limited to, golf carts, motorcycles, scooters, or farm utility vehicles on the competition grounds of licensed competitions. Minors who have a valid temporary license may operate the above described motorized vehicles as long as they are accompanied by an adult with a valid driver's license. *The parent(s), legal guardians(s), or individual who signs the entry blank as a parent or guardian of a minor operating a motorized vehicle in violation of this rule are solely responsible for any damages, claims, losses or actions resulting from that operation.* Violations of this rule will be cause for sanctions against the parent(s), guardian(s) and/or trainer(s) who are responsible for the child committing the offense. Penalties may include exclusion of the child, parent(s), guardian(s), and/or trainer(s) from the competition grounds for the remainder of the competition and charges being filed against any of the above individuals in accordance with Chapter 6. Wheelchairs and other mobility assistance devices for individuals with disabilities are exempt from this rule.
- USEF Membership Statement.** Life, senior active and junior active members shall be eligible to participate in all classes at Regular Competitions, Eventing Competitions at the Preliminary Level or above and Combined Driving Competitions at the Advanced Level, Dressage, Reining and Vaulting Competitions and Endurance Rides. A nonmember may participate as a handler, rider, driver, owner, lessee, agent, coach or trainer at Regular Competitions, Eventing Competitions, Dressage Competitions, Reining Competitions and Combined Driving Competitions upon payment of a \$45 Show Pass fee. Participants in the following classes are exempted from the Requirements of this rule: 1) leadline; 2) exhibitions; 3) games and races; 4) classes for 4-H members; 5) walk trot (exception: Friesian performance FR222) and academy classes (academy classes are classes limited to horses used regularly in a lesson program); 6) USDF introductory level tests, pas de deux and quadrille classes; 7) NRHA Endorsed Reining Competitions. 8) Opportunity classes, 9) citizens of other nations who have proof, in English, of current membership in good standing of their own National Federation, 10) USEA beginner novice division; and 11) assistant handlers in Dressage Sport Horse Breeding classes.

**THANK YOU FOR SUPPORTING
SIDE SADDLE AT THE USET**

NAME (OFFICE USE ONLY): _____

SIDE SADDLE SATURDAY AT THE USET 2018

JULY 14, 2018 at the USET HQ, GLADSTONE, NJ

ENTRY FEES: \$20.00 per class, except where noted.

Class # 15 Entry \$50.00

All stall, entry fees, and copies of Coggins tests MUST accompany this entry blank!

Make checks payable to:

LIBERTY NETWORK

Mail entries, fees, and all paperwork to:

SS AT THE USET c/o Danielle Buchheit
126 EAGLE CREST ROAD PORT JERVIS, NY 12771

Heartlight@optonline.net

Phone: 914-474-3666

FOR OFFICE USE ONLY

Entries recorded: ____/____/18 Check # _____
 Name on Check: _____ Amt \$ _____
 Missing Coggins? _____

One horse per entry blank. Please TYPE or PRINT.

NAME:	ADDRESS:
PHONE:	CITY:
EMAIL:	STATE:
	ZIP:

CLASS NUMBERS	NAME OF HORSE	SHOW #	EXHIBITOR	ENTRY FEES

PLEASE READ AND SIGN BELOW

By signing this entry form the undersigned recognizes that horseback riding or driving and participating in horse shows have inherent risks and dangers, and that the undersigned and any students, children or other persons for which the undersigned is responsible will hold harmless the SHOW OFFICIALS, EMPLOYEES, AND ANY OTHERS INVOLVED IN THE SHOW CONDUCT AND OPERATION, from any injury suffered during participation in horse show or on the show premises. Furthermore, the undersigned and those for whom the undersigned is responsible, agree to release, indemnify, and hold harmless, SHOW OFFICIALS, EMPLOYEES, AND ANY OTHERS INVOLVED IN THE SHOW CONDUCT AND OPERATION, Liberty Side Saddle Network and USET, from any loss, damage or injury to person, animal, property or thing which the undersigned owns or is responsible for at this event.

Total Entry Fees

Office Fee @ \$20 per rider

EMT Fee @ \$5.00 per rider

Stall Cleaning Fee @ \$25 (refundable)

Stall Fee First Day \$70

Each Additional Stall Day \$35/day

Signatures:-

OWNER _____ Print Name: _____

RIDER 1 _____ Print Name: _____

RIDER 2 _____ Print Name: _____

Parent _____ Print Name: _____

/Guardian _____

TOTAL

Side Saddle at the USET

SHOW DATE _____

#	Name of Horse	USEF#	Color	Sex	Ht	Age								
Name of Rider	Age	USEF#	Classes											
Name of Rider	Age	USEF#	Classes											

OWNER OR AUTHORIZED AGENT		RIDER ONE			TRAINER		
Owners Name	Name	Trainer Name					
Address	Address	Address					
Cell Phone	Cell Phone	Cell Phone					
Owner USEF#	USEF#	USEF#					
Email Address	Email Address	Email Address					

Entry Fee _____	
\$75.00/class	
USEF Drug	\$15
USEF Fee	\$8
USHJA	\$7
Office Fee	\$20
EMT Fee	\$5
Stall First Night	\$70 _____
Stall Add. Night	\$30 _____
Stall Cleaning Fee	\$25 _____
(Refundable)	
USEF Show Pass @	\$45 _____
USHJA Show Pass	\$30 _____

FEDERATION ENTRY AGREEMENT

By entering a Federation-licensed Competition and signing this entry blank as the Owner, Lessee, Trainer, Manager, Agent, Coach, Driver, Rider, Handler, Vaultor or Longeur and on behalf of myself and my principals, representatives, employees and agents, I agree that I am subject to the Bylaws and Rules of The United States Equestrian Federation, Inc. (the "Federation") and the local rules of The Liberty Network's "Side Saddle at the USET." I agree to be bound by the Bylaws and Rules of the Federation and of the competition. I will accept as final the decision of the Hearing Committee on any question arising under the Rules, and agree to release and hold harmless the competition, the Federation, their officials, directors and employees for any action taken under the Rules. I represent that I am eligible to enter and/or participate under the Rules, and every horse I am entering is eligible as entered. I also agree that as a condition of and in consideration of acceptance of entry, the Federation and/or the Competition may use or assign photographs, videos, audios, cable - casts, broadcasts, internet, film, new media or other likenesses of me and my horse taken during the course of the competition for the promotion, coverage or benefit of the competition, sport, or the Federation. Those likenesses shall not be used to advertise a product and they may not be used in such a way as to jeopardize amateur status. I hereby expressly and irrevocably waive and release any rights in connection with such use, including any claim to compensation, invasion of privacy, right of publicity, or to misappropriation. The construction and application of Federation rules are governed by the laws of the State of New York, and any action instituted against the Federation must be filed in New York State. See GR908.4.

Federation Release, Assumption of Risk, Waiver, and Indemnification

This document waives important legal rights. Read it carefully before signing.
I AGREE in consideration for my participation in this Competition to the following:
I AGREE that the "Federation" and "Competition" as used herein includes the Licensee and Competition Management, as well as all of their officials, officers, directors, employees, agents, personnel, volunteers and Federation affiliates.
I AGREE that I choose to participate voluntarily in the Competition with my horse, as a rider, driver, handler, vaultor, longeur, lessee, owner, agent, coach, trainer, or as parent or guardian of a junior exhibitor. I am fully aware and acknowledge that horse sports and the Competition involve inherent dangerous risks of accident, loss, and serious bodily injury including broken bones, head injuries, trauma, pain, suffering, or death. ("Harm").
I AGREE to hold harmless and release the Federation and the Competition from all claims for money damages or otherwise for any Harm to me or my horse and for any Harm of any nature caused by me or my horse to others, even if the Harm arises or results, directly or indirectly, from the negligence of the Federation or the Competition.
I AGREE to expressly assume all risks of Harm to me or my horse, including Harm resulting from the negligence of the Federation or the Competition.
I AGREE to indemnify (that is, to pay any losses, damages, or costs incurred by) the Federation and the Competition and to hold them harmless with respect to claims for Harm to me or my horse, and for claims made by others for any Harm caused by me or my horse while at the Competition. I have read the Federation Rules about protective equipment, including GR801 and, if applicable, EV114, and I understand that I am entitled to wear protective equipment without penalty, and I acknowledge that the Federation strongly encourages me to do so while WARNING that no protective equipment can guard against all injuries. If I am a parent or guardian of a junior exhibitor, I consent to the child's participation and AGREE to all of the above provisions and AGREE to assume all of the obligations of this Release on the child's behalf. I represent that I have the requisite training, coaching and abilities to safely compete in this competition.
I AGREE that if I am injured at this competition, the medical personnel treating my injuries may provide information on my injury and treatment to the Federation on the official USEF accident/injury report form.
BY SIGNING BELOW, I AGREE to be bound by all applicable Federation Rules and all terms and provisions of this entry blank and all terms and provisions of this Prize List. If I am signing and submitting this Agreement electronically, I acknowledge that my electronic signature shall have the same validity, force and effect as if I affixed my signature by my own hand.

Rider/Driver/Handler	Owner/Agent	Trainer	Coach
Vaultor/Longeur (mandatory)	(mandatory)	(mandatory)	(if applicable)
Signature: _____	Signature: _____	Signature: _____	Signature: _____
Print Name: _____	Print Name: _____	Print Name: _____	Print Name: _____
Parent/Guardian Signature: (Required if Rider/Driver/Handler/Vaultor/Longeur is a minor) _____			
Print Parent/Guardian Name: _____		Emergency contact phone _____	
Is Rider/Driver/Vaultor a US Citizen: _____ Yes _____ No			

Total Due _____

Member Card
 O _____
 R _____
 T _____

COGGINS

Please Mail entries to:
 Ms Danielle Buchheit
 126 Eagle Crest Road
 Port Jervis, NY 12771

Make checks payable to:
Liberty Network

SPONSORSHIP LEVELS

GOLD MEDAL LEVEL \$ 500.00 **

Sponsorship of DIVISION of choice; and preferred vendor space in Rotunda area of the USET Headquarters.

SILVER MEDAL LEVEL: \$250.00 **

Sponsorship of CHAMPIONSHIP in division of choice; and indoor vendor space off of Rotunda of the USET HQ.

BRONZE MEDAL LEVEL: \$100.00 **

Sponsorship of CLASS of CHOICE and indoor vendor, if available.

**** MINIMUM CASH DONATION \$50.00 + balance in MERCHANDISE, OR SERVICES IN KIND.**

PARTY SPONSORSHIP: \$50.00

SIDE SADDLE at the USET 2018

SPONSOR AGREEMENT FORM

Name _____
 Email: _____
 Company _____
 Address _____
 City/State/Zip _____
 Division/Class Preference _____
 Phone _____ Fax _____
 Date Paid _____

Please refer to the Sponsorship Information for each sponsorship level. Sponsorship this year includes a minimum CASH donation of \$50.00 when combined with goods or services. Donations of items that may be used for class trophies are very welcome. Please value all goods and services at a fair market, and check the appropriate sponsorship level. Liberty Side Saddle Network reserves the right to determine fair market value of goods or services.

<p>Sponsorship Levels</p> <p>_____ Gold Medal \$500*</p> <p>_____ Silver Medal \$250*</p> <p>_____ Bronze Medal \$100*</p> <p>_____ Party Sponsor \$ 50</p> <p>* \$50.00 cash minimum</p>	<p>Sponsorship Donation</p> <p>_____ A check is ENCLOSED \$ _____</p> <p>_____ A donation of goods _____</p> <p>_____ A donation of services _____</p> <p>_____</p> <p style="text-align: center;"><u>CHECKS PAYABLE TO: LIBERTY NETWORK</u></p>
---	---